

INSTRUCTIONS FOR INSTALLING QSC USB DEVICE DRIVER IN WINDOWS 8 SYSTEMS

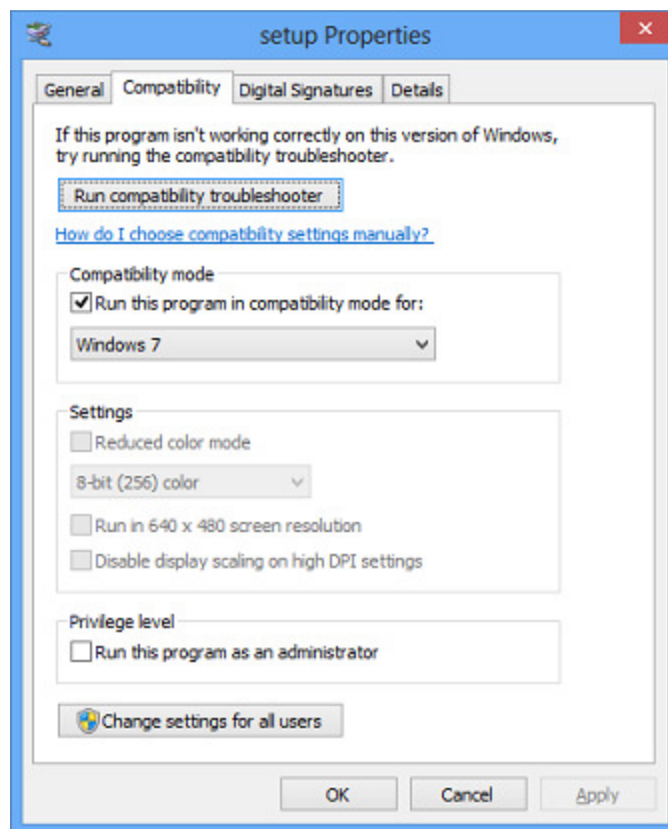
Use with:

- DCP Manager for DCP100, DCP200, DCP100
- DCM Manager for DCM30D, DCM10D
- SC28 Updater for SC28

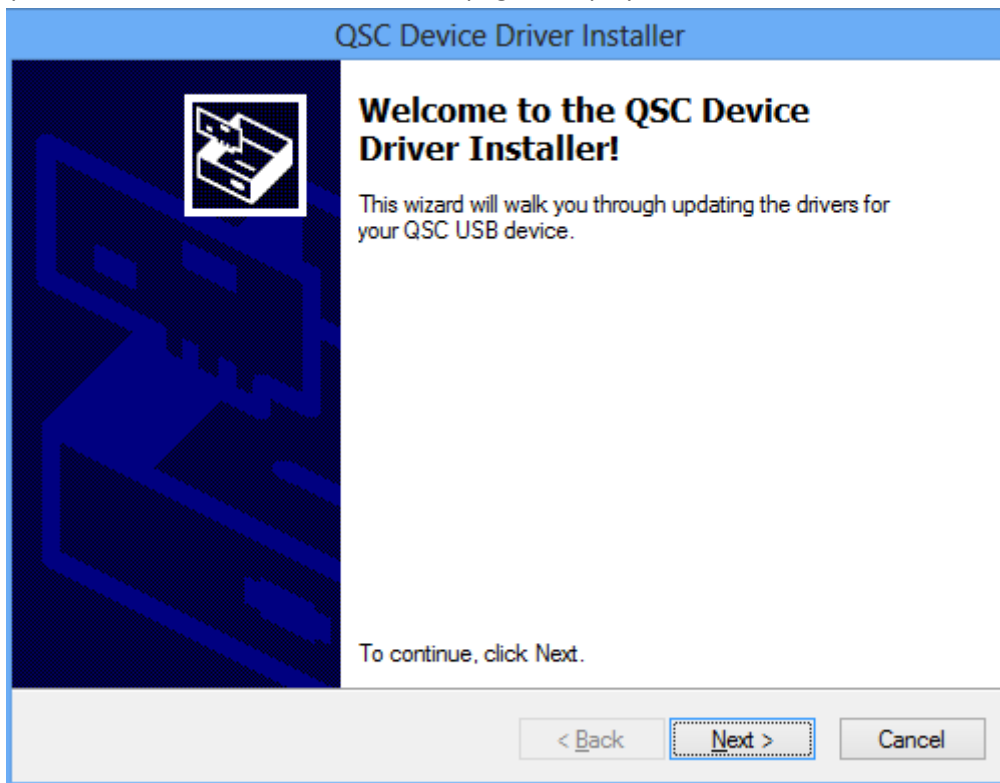
1. Download and unzip appropriate install package:

- For 32-bit platforms, download QSCUSBWin32Install or QSCUSBWin32MultiLanguageInstall
- For 64-bit platforms, download QSCUSBWin64Install or QSCUSBWin64MultiLanguageInstall

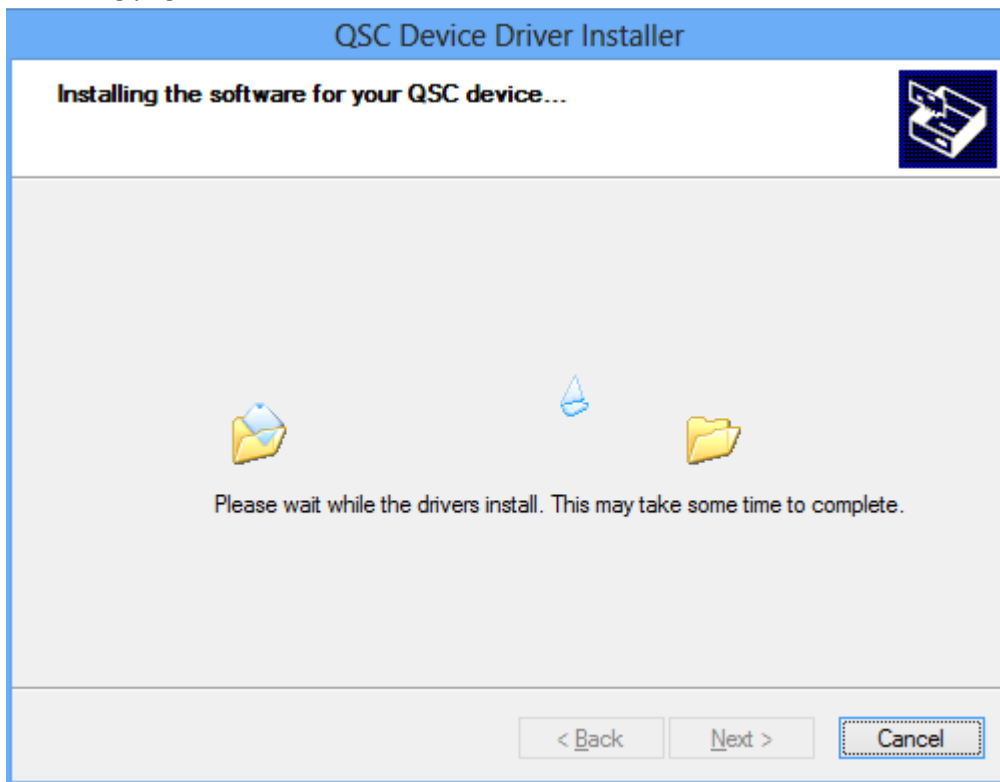
2. Right-click on setup.exe and click on Properties, then click on Compatibility tab. Select settings as shown and click OK:



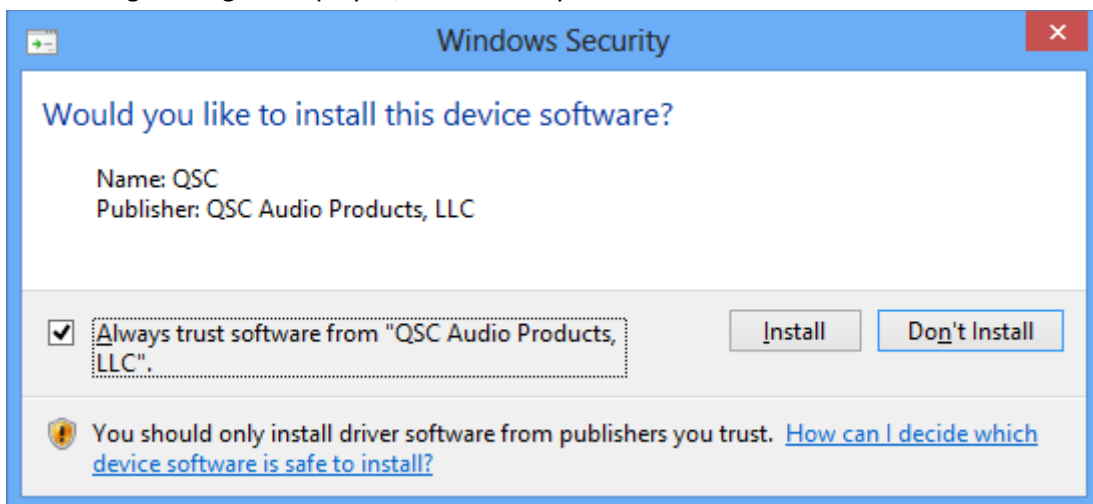
3. Double-click on setup.exe to launch driver installation program. If a message appears asking “Do you want to allow the following program from an unknown publisher to make changes to this computer?” click Yes. When the Welcome page is displayed, click Next:



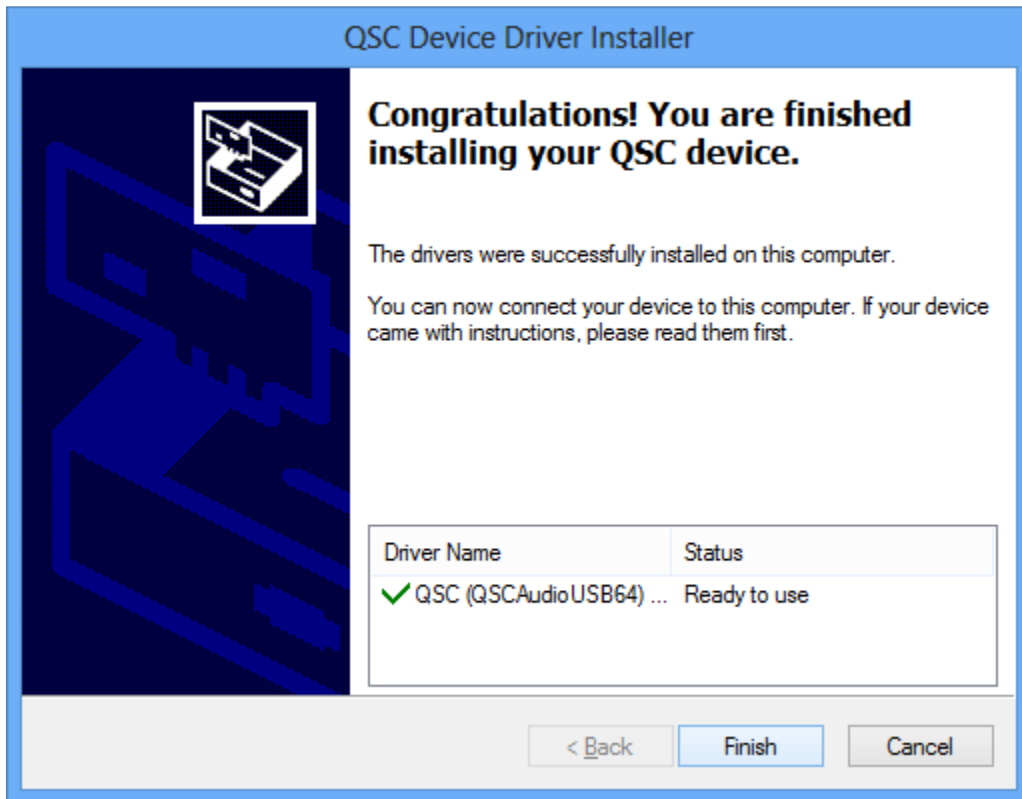
4. The following page will be shown as the driver installs:



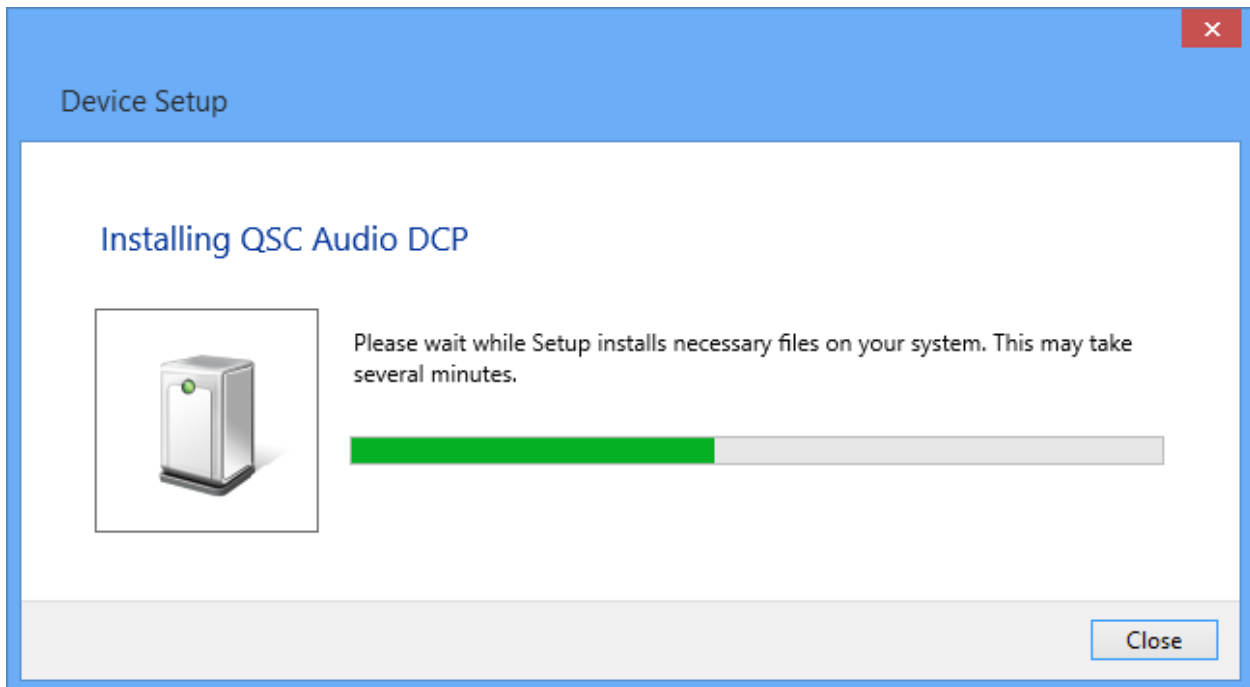
If following message is displayed, check "Always trust..." and click Install.



5. When installation is complete, the following will be displayed:



6. Connect a USB cable between the PC and QSC device. The following will be displayed:



7. When driver setup is complete, you may access your device using the appropriate application.